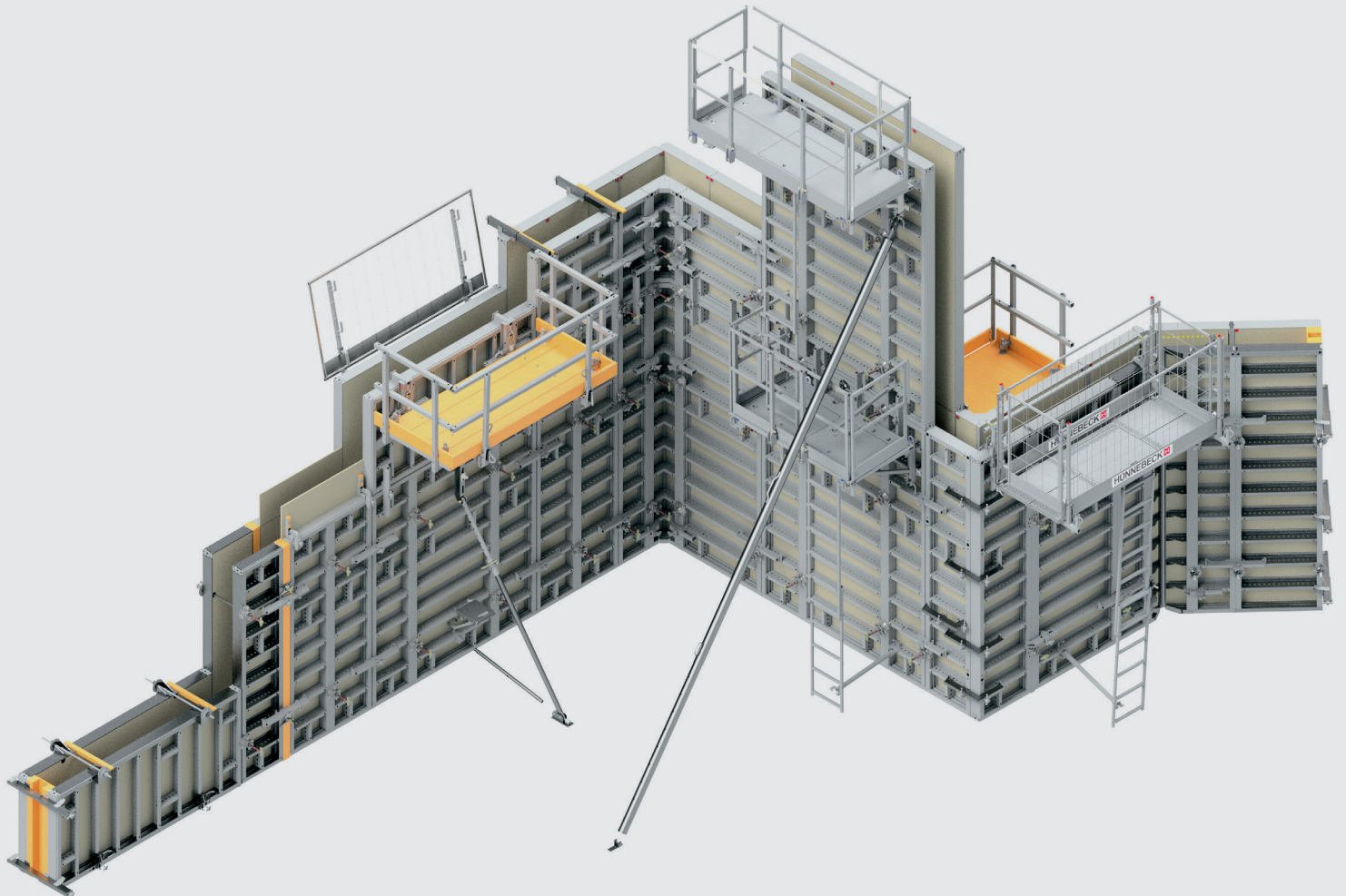


MANTO[®] G3

The new generation of our 80 kN/m² wall formwork system for large wall areas and big challenges is now more efficient than ever.



At Work For You

HÜNNEBECK 
BY BRAND SAFWAY

First choice for large wall areas

When large wall areas are to be formed, MANTO® is first choice. Quality, functionality and flexibility are the key criteria that have made the system one of the most widely used formwork systems in industrial and infrastructure construction. MANTO® also proves its strength in residential construction regularly.

Now the new generation of MANTO® is on the starting line, die G3. Its particular bonus: The tie system can be selected at will, including particularly efficient one-sided ties. In addition, the plastic formwork skin delivers a high-quality, smooth concrete finish.

Flexible and easy tying

MANTO® G3 makes tying flexible and easy. Bigger tying apertures permit tie play up to $\pm 2.5^\circ$, making work easier. Interchangeable plastic inserts protect the tying apertures from dirt and concrete. At the same time they enable rapid adaptation to the various tie systems. Efficient single-sided tying

is possible with the PLATINUM 100 tie system, but also with a special MANTO® DW 15 tie.

The traditional DW 15 and DW 20 can also be used with no problem, as can she-bolt and taper ties.

The wall thickness can be infinitely adjusted when using single-sided ties with the PLATINUM 100 tie system.

Marks at 2.5 cm intervals make measurement easy.

► Product benefits

MANTO® G3

Time and cost savings in erection and dismantling thanks to the possibility of single-sided tying

Rapid adaptation to different tie systems thanks to plastic inserts

Excellent efficiency thanks to tie hole reinforcements built into the frame, which protect the formwork skin and the tie tube from damage.

Clean and tidy working thanks to plastic inserts, which protect the tie openings from dirt

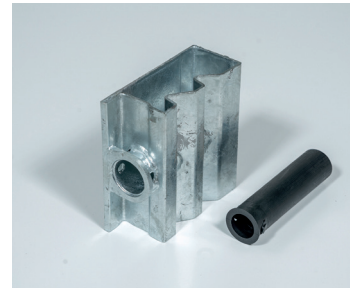
Sealing cones of the single-sided tie can be used multiple times

Compatible with tried and tested MANTO® and in some areas with the PLATINUM 100 formwork system from Hünnebeck

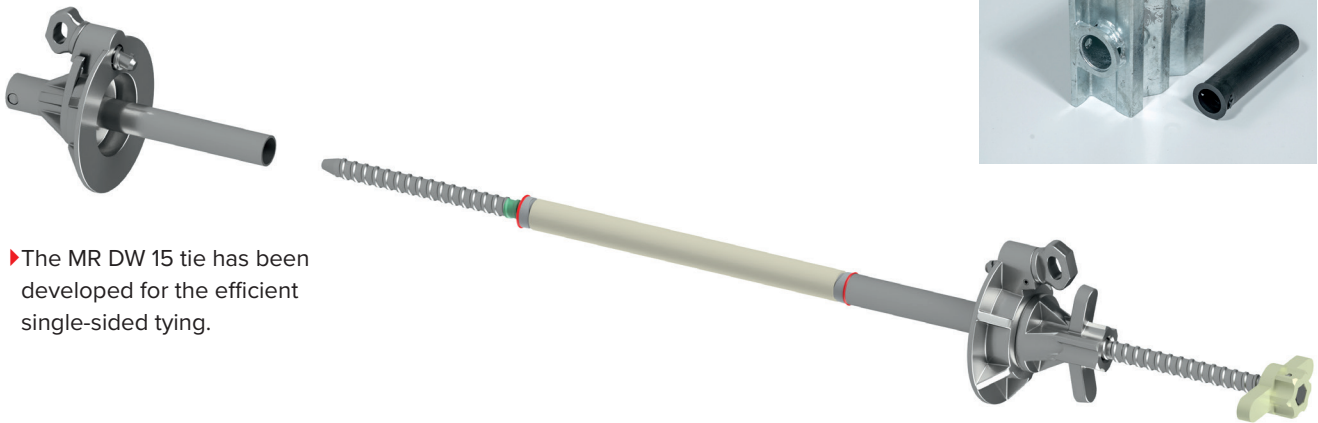


►Flexible: Various tie systems can be used. Here, the efficient PLATINUM 100 tie for single-sided tying and taper ties for classic, two-sided tying

►Interchangeable plastic inserts protect the tie hole from dirt



►The MR DW 15 tie has been developed for the efficient single-sided tying.



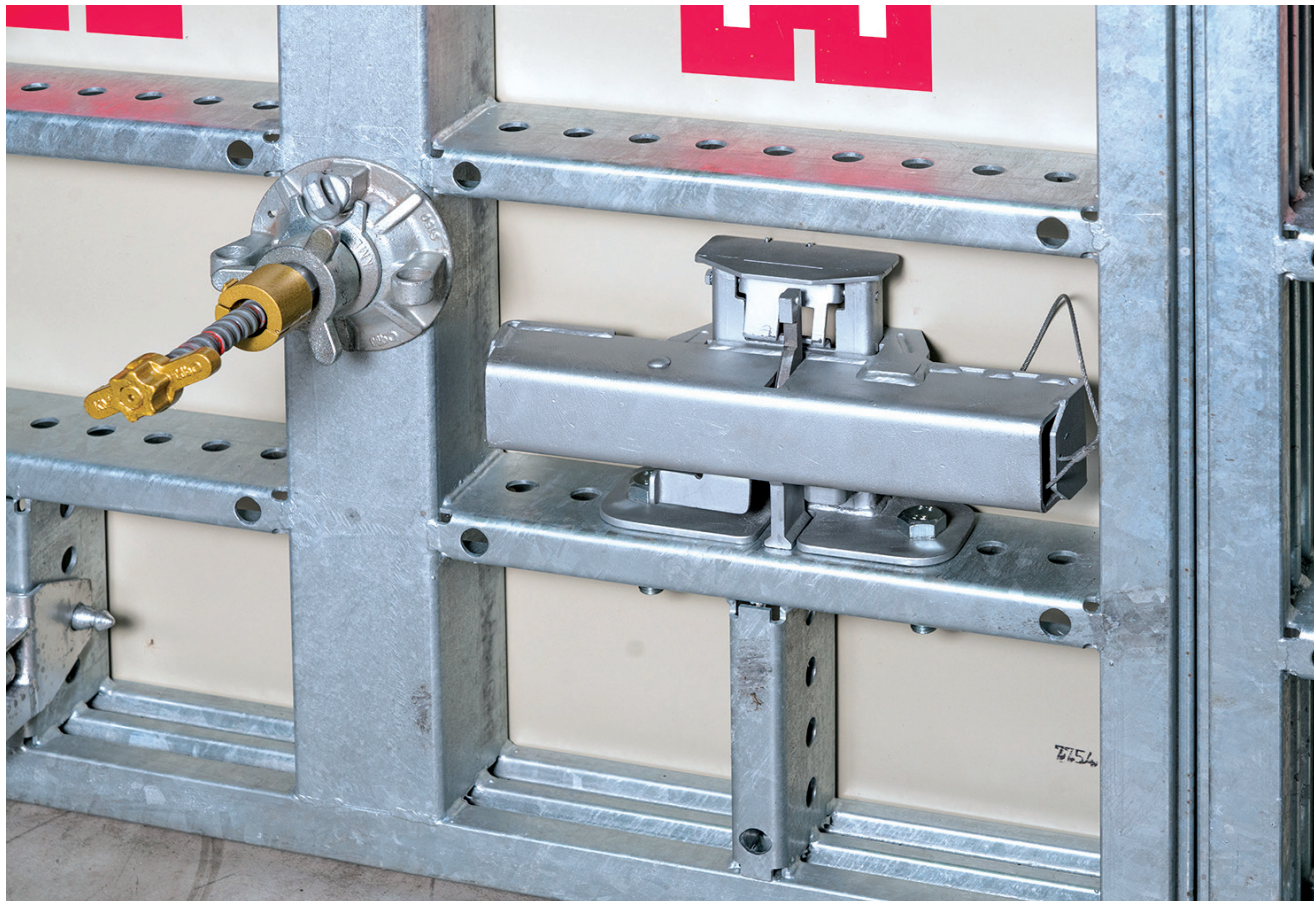
Strong panels

The new panels also offer numerous advantages: For example, the vertical bars increase the durability of the panels.

The vertical bars increase the stability of the panels and offer additional connection options for accessories.

The central vertical bars also stabilize the system. In addition, they also serve as quick connectors for aligning struts and hence for the rapid alignment and securing of formwork from ground level.

The MANTO® G3 panels offer the option of integrated brackets for standard connectors. A universal formwork platform system also ensures safe working during erection, concreting and dismantling.



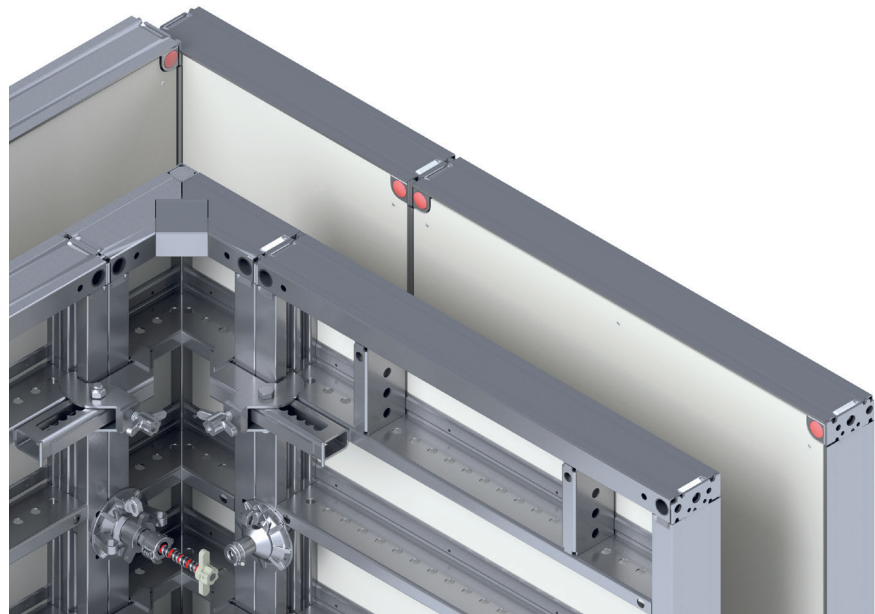
▶ Integrated parking position available for standard connectors

Rigid corner for greater stability



▶ The new rigid corner element

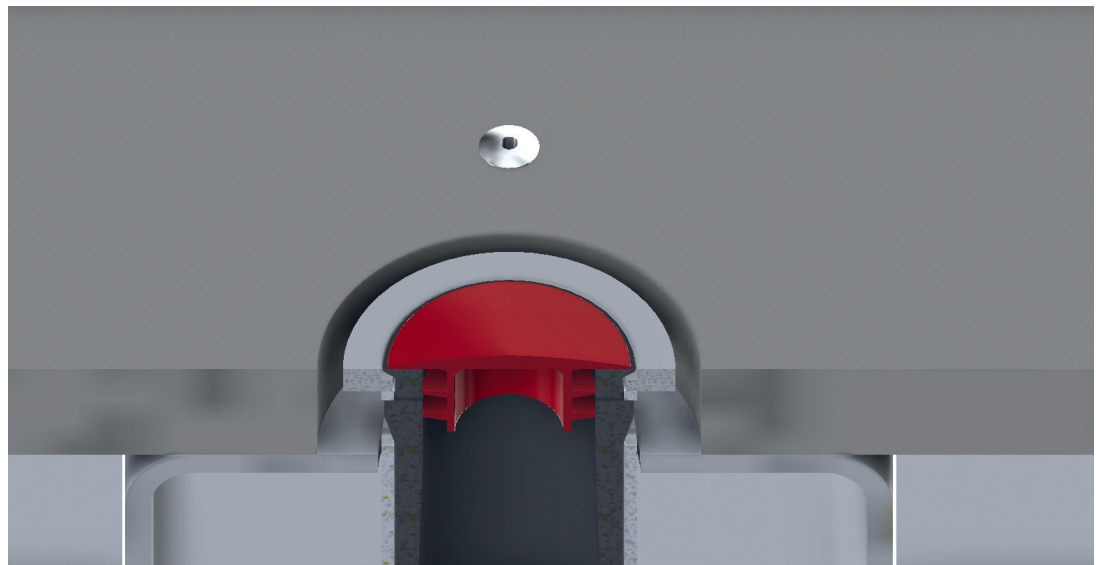
The new rigid corner element makes bracing elements superfluous. The cross bars have the same profile as the panel, enabling seamless transition. The elimination of open profiles reduces contamination and hence cleaning costs. The crane hook is engaged in the center, leading to greater safety and stability.



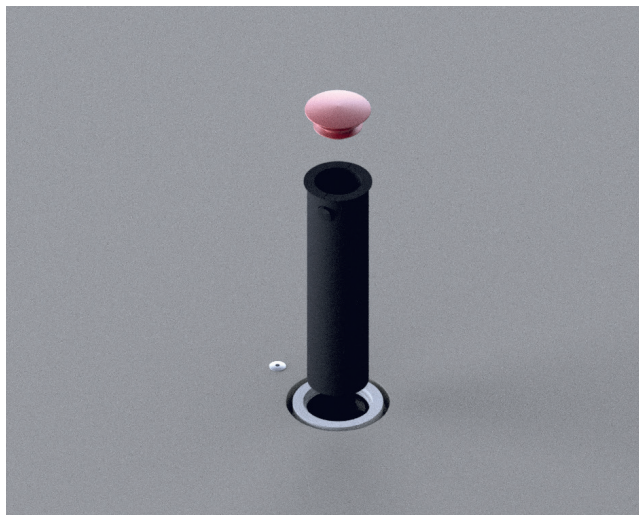
▶ Detailed view of the corner. The one-sided PLATINUM 100 tie is easily visible, as is the bracket for the crane hook

Stable and efficient plastic formwork skin

The 19 mm plastic formwork skin produces a smooth, high-quality concrete finish. The plastic formwork skin is durable; the service life is further increased by steel-clad tie openings, which reduce damage by the tie rods. Cleaning costs are also minimized. This makes it particularly efficient.



▶ Cross section of the formwork skin with tying aperture and sealing cone



▶ Tying aperture, sleeve and sealing cone



▶ Steel-clad tying aperture with sealing cone

► Technical data, MANTO® G3

Product description	Crane-mounted large area formwork for walls
Panel widths	30 45 60 75 90 105 120 240 cm
Panel heights	120 270 330 cm
Multipurpose panels	75 x 120 75 x 270 75 x 330 cm
Profile height	14 cm steel frame profile (closed)
Formwork skin	ECOPLY full plastic formwork skin (19 mm thickness)
Average weight	47 to 75 kg/m ² (including connectors)
Max. concrete pressure	80 kN/m ² (line 6, partially also line 7)
Corrosion protection	Steel frame and connectors fully hot-dip galvanized
Relevant standards	Meets EN 1993 DIN 18202 DIN 18218 DIN 18216
Standard connection	Aligning panel clamps (aligned and flush connection) Tapered alignment coupler
Special connection	Adjustable alignment clamps Corner clamps Universal connectors
Internal corners	35/35 cm
Hinged corners	60° up to max. 175° angle
External corners	Basic panel with corner clamps
Installation/stripping times	t = 0.2 – 0.4 hours/m ² *
Special features	<ul style="list-style-type: none"> • Large panels 240 360 480 x 270 cm • MANTO® shaft corner for easier forming of shafts • Comprehensive accessories program • Flexible choice of tie system • Possibility of single-sided tying

* Hünnebeck's own measurements

Useful accessories leave nothing to be desired

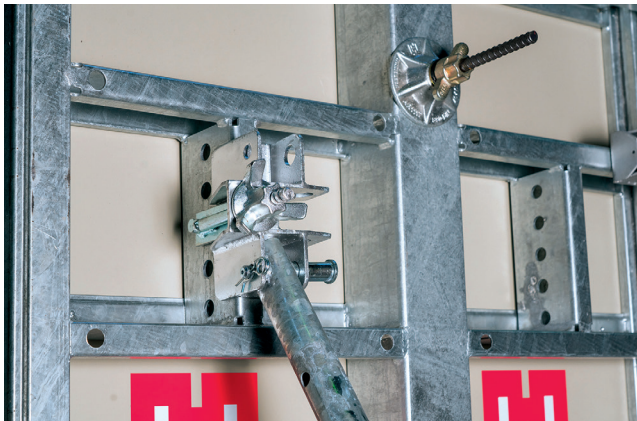
► Multi-system accessories



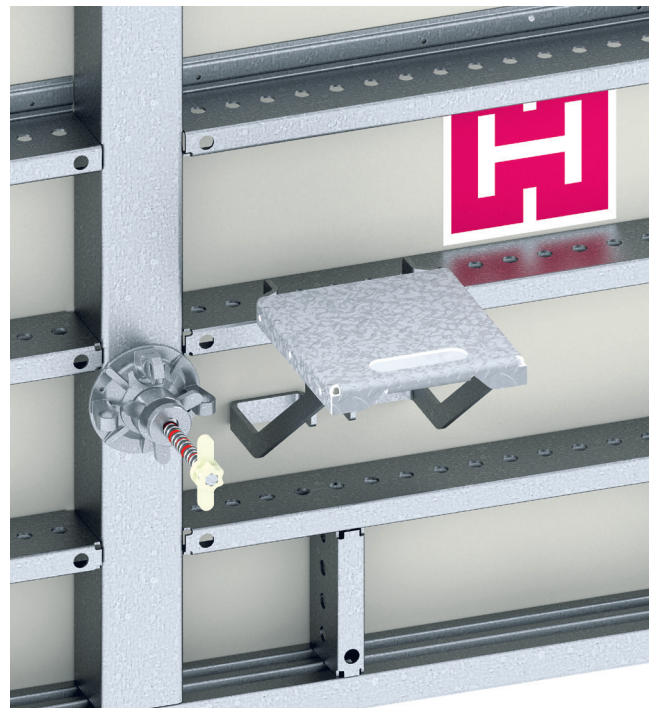
► DW 15 multi-bolt



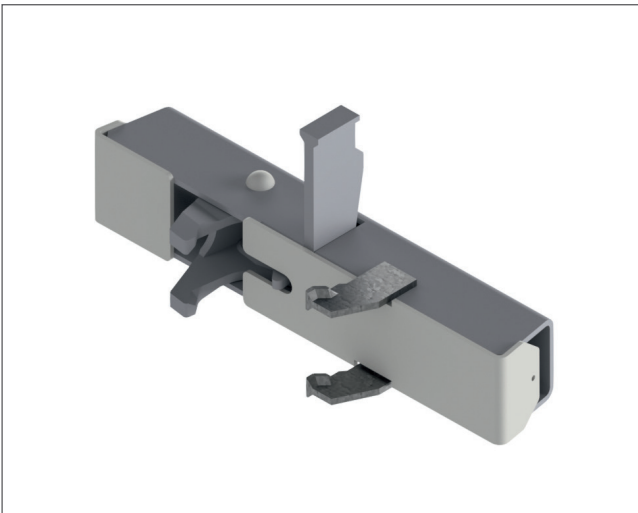
► Crane hook plus



► The rapid strut connector enables the quick connection of alignment struts. The connector can be fitted vertically and horizontally



► The platform step makes working on formwork easier



▶ Tapered alignment coupler



▶ Lift bar



▶ The lattice box enables the storage of connectors, tie nuts, etc. It can also be attached to a trolley and moved by crane. The ease of handling saves considerable crane time – a distinct improvement for warehousing and logistics.

Fair faced concrete with version MANTO G3 M

The version MANTO G3 M has internal tying points for fair faced concrete requirements and enables an orderly tie pattern. The accessories of G3 and G3 M can be used with both systems.

► Technical data, MANTO® G3 M

The MANTO® G3 M differs from the MANTO® G3 in the following points:

Product description	Crane-mounted large area formwork for walls
Panel widths	60 90 120 240 cm
Panel heights	120 270 330 cm
Average weight	55 to 83 kg/m ² (including connectors)

► Product benefits

MANTO® G3 M

Time and cost savings in erection and dismantling thanks to the possibility of single-sided tying.

Rapid adaptation to different tie systems thanks to plastic inserts

Internal tying points for fair-faced concrete requirements

Excellent efficiency thanks to tie hole reinforcements built into the frame, which protect the formwork skin and the tie tube from damage.

Clean and tidy working thanks to plastic inserts, which protect the tie openings from dirt

Sealing cones of the single-sided tie can be used multiple times

The universal formwork platform

The universal load class 2 formwork platform (150 kg/m²) can be mounted on both the RASTO® and the MANTO® formwork system. Only the respective adapters are system-specific. The platform can be used both as a concreting platform and as an intermediate platform.

Safety is built into the platform: It is automatically locked when hooked in place by crane. There is already 360° side protection when stepping onto the platform for the first time. The crane can be attached and released without PSE. The bracket can be adjusted by 5 cm using the adapter. Trip hazards can thus be avoided.

The platform is also highly flexible. The brackets are arranged on the panel as required. They are not supported from below, which means more room

for accessories and planning can be flexible. The pads on the brackets can also be flexibly arranged. There is no prescribed grid pattern. System pads are used as compensation pads. The front railings with the door function swing open in both directions and lock at 90°.



► The universal formwork platform

Our Head Offices

Hünnebeck Austria GmbH

Wiener Str. 30
2326 Maria Lanzendorf
+43 2235 4203039
www.huennebeck.at

Hünnebeck Deutschland GmbH

Rehhecke 80
40885 Ratingen
+49 2102 9371
www.huennebeck.de

Hünnebeck in France

Allée de Fétan 256 – BP 130
01601 Trévoux
+33 4740 89050
www.huennebeck.fr

Hünnebeck in the Netherlands

Kwartelweg 6a
NL-4791 RP Klundert
+31 168 387440
www.huennebeck.nl

Hünnebeck in Ireland

Unit 295
Block H
Blanchardstown Corporate Park
Dublin 15
D15 WVK1
www.hunnebeck.ie

Hünnebeck Italia S.p.A.

Via Isonzo, 9
22078 Turate (Como)
+39 2 969731
www.huennebeck.it

Hunnebeck Polska Sp. z o.o.

Łubna 55
05-532 Baniocza
+48 22 2312300
www.huennebeck.pl

Hunnebeck România SRL

Șoseaua de Centură, Rudeni – Chitila, Rudeni
077046 jud. Ilfov
+40 37 6206150
www.huennebeck.ro

Hunnebeck in the UK

Rush Lane, Staffordshire, Tamworth
Birmingham, B77 1LT
+44 1827 289955
www.hunnebeck.co.uk

Hünnebeck is a proud member of the BrandSafway Companies. Large enough to leverage economies of scale to safely increase productivity, BrandSafway is also nimble and responsive, delivering unmatched service with local labor and management.

Hünnebeck (Europe), Aluma Systems (North and Latin America) and SGB (MEA/SEA), represent the Forming & Shoring Division of BrandSafway. With branch locations worldwide, and over 240 years of combined history and experience, we are ready to deliver innovative Forming and Shoring solutions anywhere around the world. Our main contacts outside of Europe are:

MEAI and South East Asia

SGB Group
Techno Park
37656 Dubai
+971 4 8132000
Fax: +971 4 8132001
ae@bels.com
www.sgbgroup.com

North America

Aluma Systems
2 Manchester Court
Bolton, ON L7E 2J3
Canada
+1 905 6695282
www.aluma.ca

The copyright to this brochure remains with BrandSafway. All trademarks mentioned in this brochure are the property of BrandSafway, unless otherwise noted or in any other way perceivable as third party rights. Hünnebeck, SGB and Aluma Systems are trademarks of BrandSafway. Furthermore, all rights are reserved, in particular in the event of a patent being granted or a utility model being registered. The unauthorized use of this brochure, the trademarks and other proprietary rights contained herein is expressly prohibited and constitutes an infringement of copyright, trademark rights or other proprietary rights.

The illustrations shown in this brochure reflect day-to-day construction site operations and are therefore not always correct from a safety point of view.

BRAND SAFWAY

Aluma SYSTEMS
BY BRAND SAFWAY

HÜNNEBECK
BY BRAND SAFWAY

SGB
BY BRAND SAFWAY